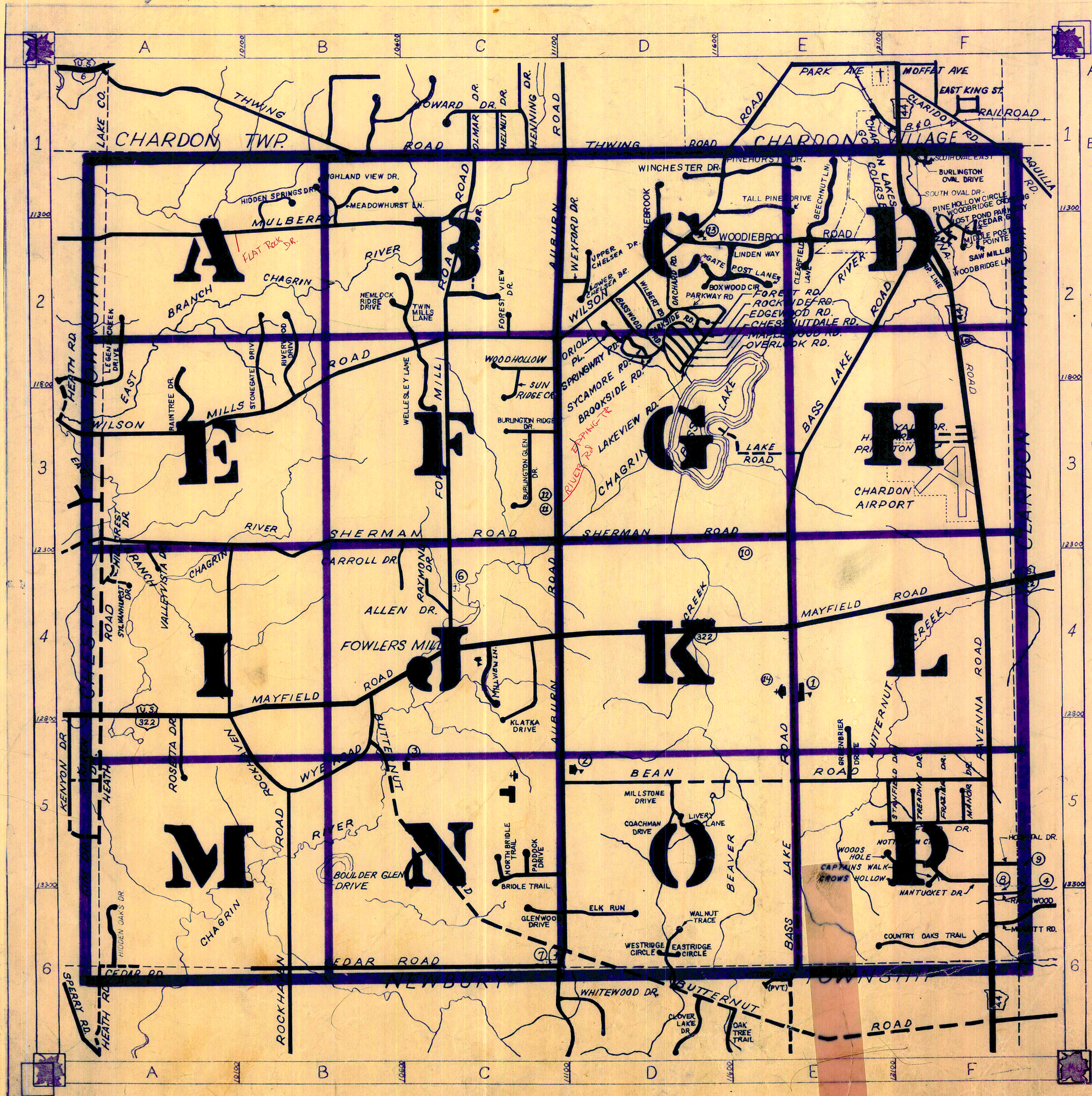


ROAD INDEX



Grid	Letter	Street Name	Code	Street Name	Code	Street Name	Code
A	H cont.	ALLEN DR	C4	HOSPITAL DR	F5	RIVERVIEW DR.	B-3
		AUBURN RD	D1-C6			ROCKHAWN RD.	A4-B6
B	J	BASS LAKE RD	F2-E6			ROCKSIDE RD.	D-2
		BASSWOOD RD	D2			ROSETTA DR.	A-5
C	K	BEAN ROAD	D-F5			RIVER RD	C
		BEECHNUT LN	E1			SAW MILL BEND (CV)	A3-E3
D	L	BOULDER GLEN DR	C5			SPRINGWAY RD	D2
		BOXWOOD CIR	D2			STANFIELD DR	E5
E	M	BRADFORD DR	F5			STONEGATE DR	B3
		BRIDLE TR	C5			SUN RIDGE CR.	C2
F	N	BROOKSIDE RD	D2			SYCAMORE RD	D2
		BURLINGTON GLEN DR	C3			SYLVANURST DR.	A4
G	O	BURLINGTON OAK DR (CV)	F1			STRAWBERRY LN. (PVT)	I
		BURLINGTON RIDGE DR	C3			TALL PINES DR	E1-2
H	P	BUTTERNUT RD	B4-D6			THWING RD	B1-D1
		BLUE HERON TR	G			TREADWAY DR.	F5
I	Q	CAPTAINS WALK	F5			TWIN MILLS LANE	B2
		CARRROLL DR	C4			UPPER CHELSEA DRIVE C2	
J	R	CEGAR RD	A6-C6			VALLEYVISTA DR	A4
		CHELSEA-UPPER + LOWER	D2			WALNUT TRACE	D6
K	S	CHESTNUTDALE RD	D2			WEARSCH RD.	E2
		CLEARFIELD LANE	PVT E1-C2			WELLESLEY LN	C3
L	T	COACHMAN DRIVE (PVT)	E1-C2			WESTRIDGE CIR	D6
		COUNTRY OAKS TRAIL	F6			WEXFORD DR	D2
M	U	CROWS HOLLOW	F5			WILSON MILLS RD	A3-E1
		EDGEMOOR RD	D2			WINCHESTER DR	D1
N	V	EDGEWOOD RD	C2			WOODBRIDGE CROSSING F2	
		ELK RUN	C5			WOODBRIDGE LANE	F2
O	W	ELK TR	G			WOOD HOLLOW DR	C2
		FOREST RD	D2			WOODIEBROOK RD	D2
P	X	FOREST VIEW DR	C2			WOODS HOLE	F5
		FOWLERS MILL RD	C1-C4			WYE RD	F5
Q	Y	FRAZIER DR	F5			WATERFOWL LN (MHP L)	
		FLAT ROCK RD	(A)			WILSHIRE LN (C)	
R	Z	GATE POST LN	D-ER			YALE DR. (PVT)	F-3
		GLENWOOD DR	C6				
S	AA	GREENBRIER DR	E5				
		HARVARD DR (PVT)	F3				
T	BB	HEATH RD	A3-A5				
		HIGHLAND VIEW DR	B1				
U	CC	HILLCREST DR	A4				

- ① MUNSON ELEM. SCHOOL
- ② SISTERS OF NOTRE DAME ED. CENTER
- ③ SISTERS OF NOTRE DAME ED. CENTER
- ④ WELFARE DEPT
- ⑤ FOWLERS MILLS COMM. CHRISTIAN CH.
- ⑥ FOWLERS MILLS CEMETERY
- ⑦ MAPLE HILL CEMETERY
- ⑧ BEAUGA COUNTY SAFETY CENTER
- ⑨ BEAUGA CO. COMM. HOSPITAL
- ⑩ HEATHERHILLING.
- ⑪ MUNSON TWP. TOWN HALL
- ⑫ MUNSON VOL. FIRE DEPT.
- ⑬ ST. LUKE'S EPISCOPAL CHURCH
- ⑭ PEACE LUTHERAN CHURCH

MUNSON TOWNSHIP

SCALE: 1" = 2000'

ROBERT L. PHILLIPS
GEAUGA COUNTY ENGINEER

- UNPAVED ROAD
- PAVED ROAD
- ++++ RAILROAD
- TOWNSHIP LINE
- COUNTY LINE
- CORPORATION LINE

LAKE

CHARDON

TWP

TWP

CHESTER

TWP

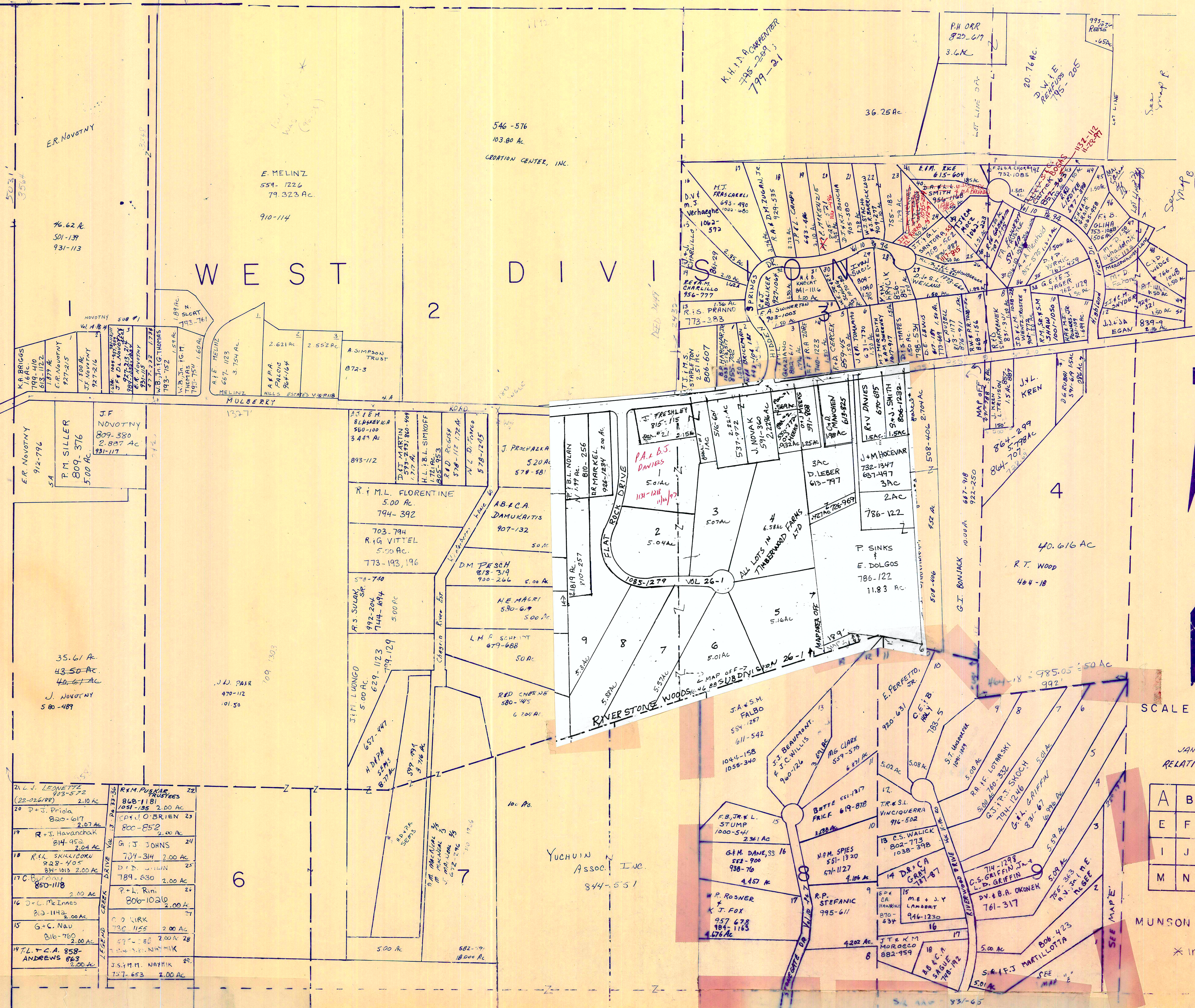
WEST DIVISION

2

4

6

7



All Lots except
where noted
to Jay Jones
589-112

✓ indicates survey on
file with tax map dept.

SCALE 1" = 300'

JANUARY 1, 1997
RELATIVE REPRESENTATION

A	B	C	D
E	F	G	H
I	J	K	L
M	N	O	P

MUNSON TWP

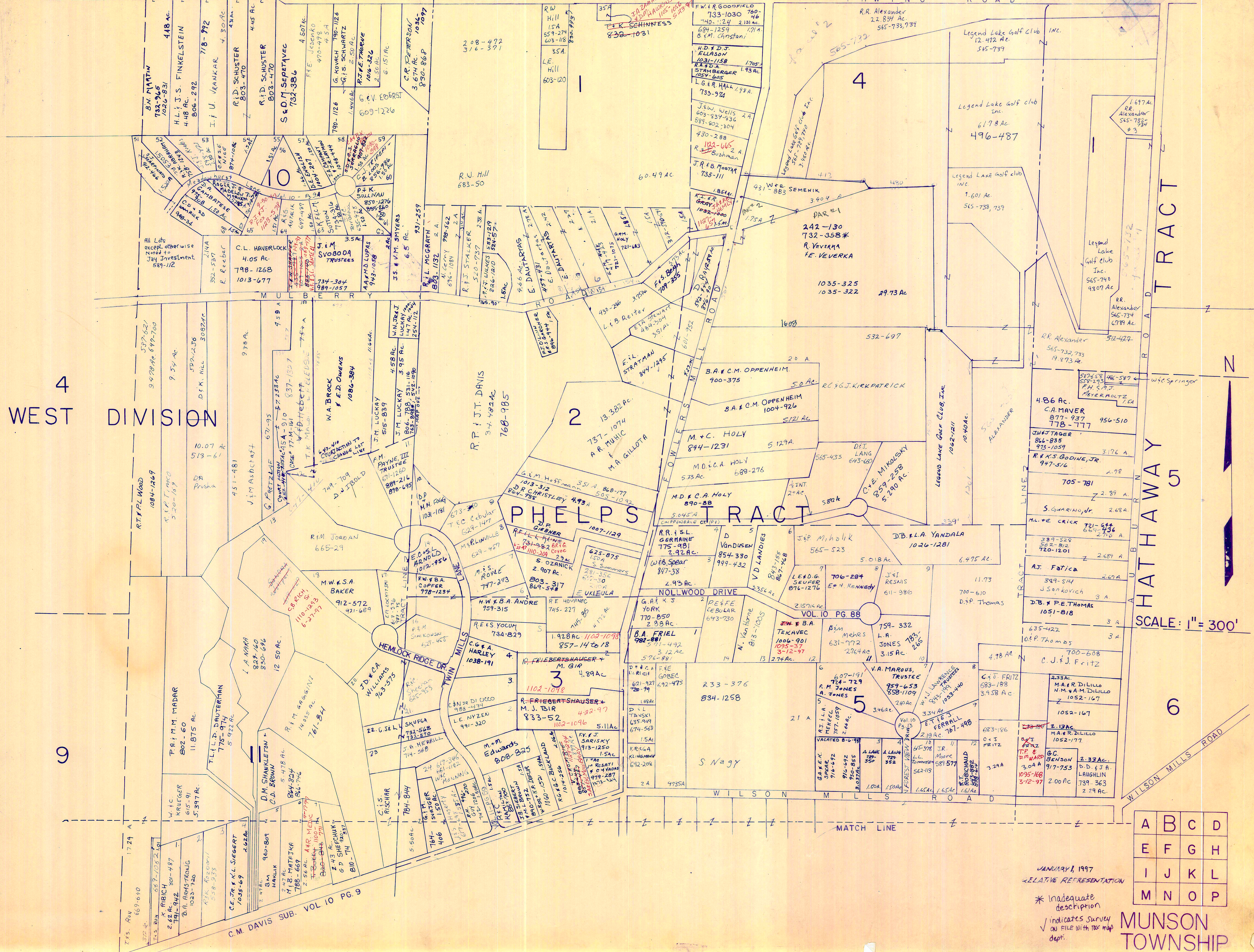
* inadequate
description

21 L. J. LEONETTE 905-572 (22-026/PP) 2.10 AC	22 R.M. PUSKAS TRUSTEES 818-1181 1081-135 2.00 AC
20 P. J. Priola 820-607 2.07 AC	23 (P.F.) O'BRIEN 23 800-852 2.00 AC
19 R. J. Havanchak 814-953 2.04 AC	24 G. J. JOHNS 704-314 2.00 AC
18 R.H. SKILLCORN 828-405 89-1013 2.00 AC	25 D. J. SHLIM 25 789-630 2.00 AC
17 C. BUREAU 850-1118 2.00 AC	26 P. L. Rini 800-1020 2.00 AC
16 J. C. McInnes 810-1143 2.00 AC	27 C. D. KIRK 730-1155 2.00 AC
15 G. C. Nau 810-769 2.00 AC	28 J. W. S. NATHAN 737-653 2.00 AC
14 T. C. A. ANDREWS 863 2.00 AC	29 J. S. M. NATHAN 737-653 2.00 AC

YUCHIN
Assoc. Inc.
844-551

SEE MAP E

CHARLTON TOWNSHIP



4 WEST DIVISION

HATHAWAY ROAD

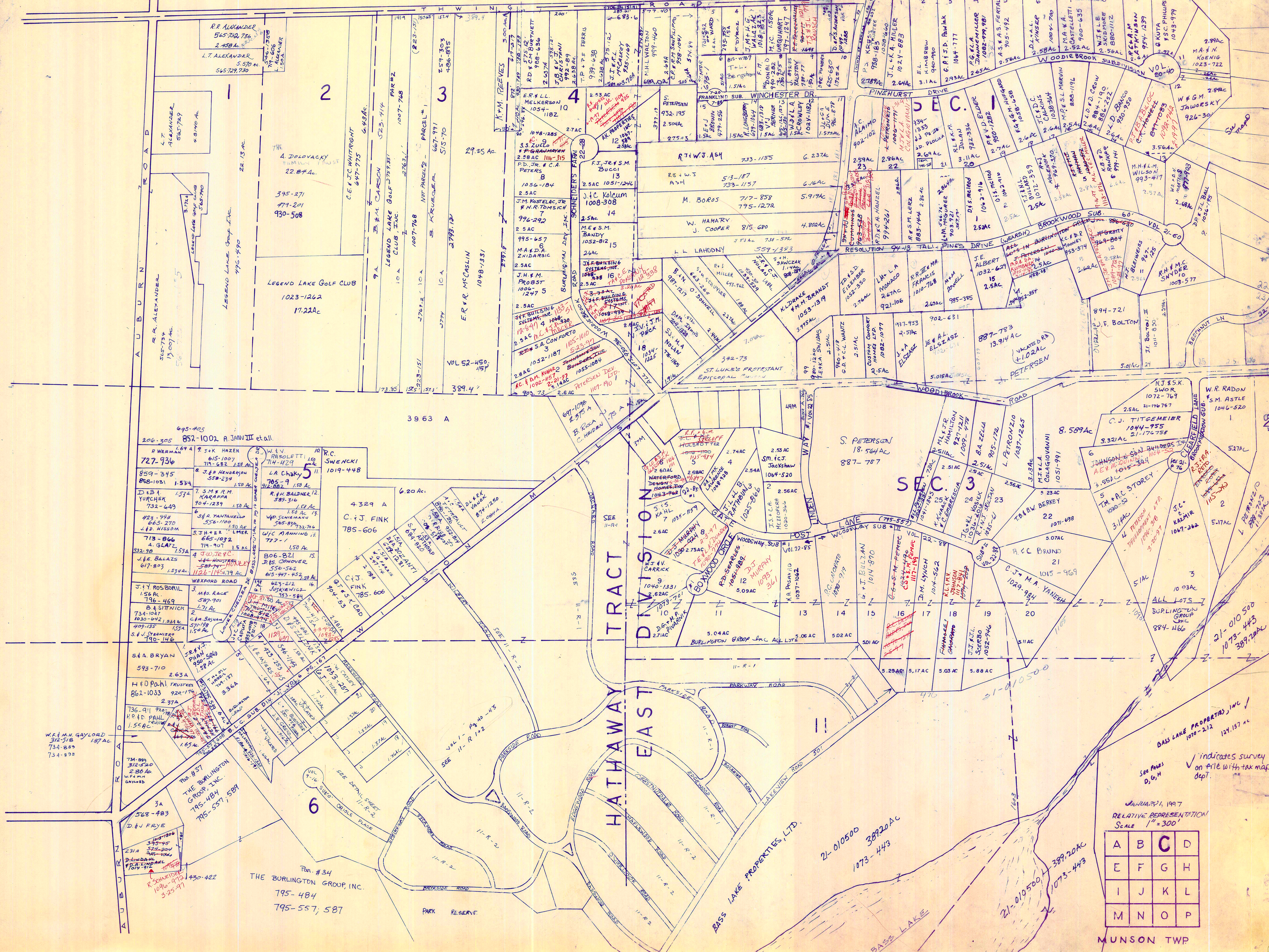
SCALE: 1" = 300'

A	B	C	D
E	F	G	H
I	J	K	L
M	N	O	P

JANUARY, 1997
RELATIVE REPRESENTATION

* inadequate description
✓ indicates survey on file with tax map dept.

MUNSON TOWNSHIP



A	B	C	D
E	F	G	H
I	J	K	L
M	N	O	P

JANUARY 21, 1997
 RELATIVE REPRESENTATION
 SCALE 1" = 300'

See Pages D, G, H
 indicates survey on file with tax map dept.

Par. #34
 THE BURLINGTON GROUP, INC.
 795-484
 795-557, 587

21-010500
 38920AC
 1073-443

21-010500
 38920AC
 1073-443

BASS LAKE PROPERTIES, INC.
 1070-212
 121.157 AC

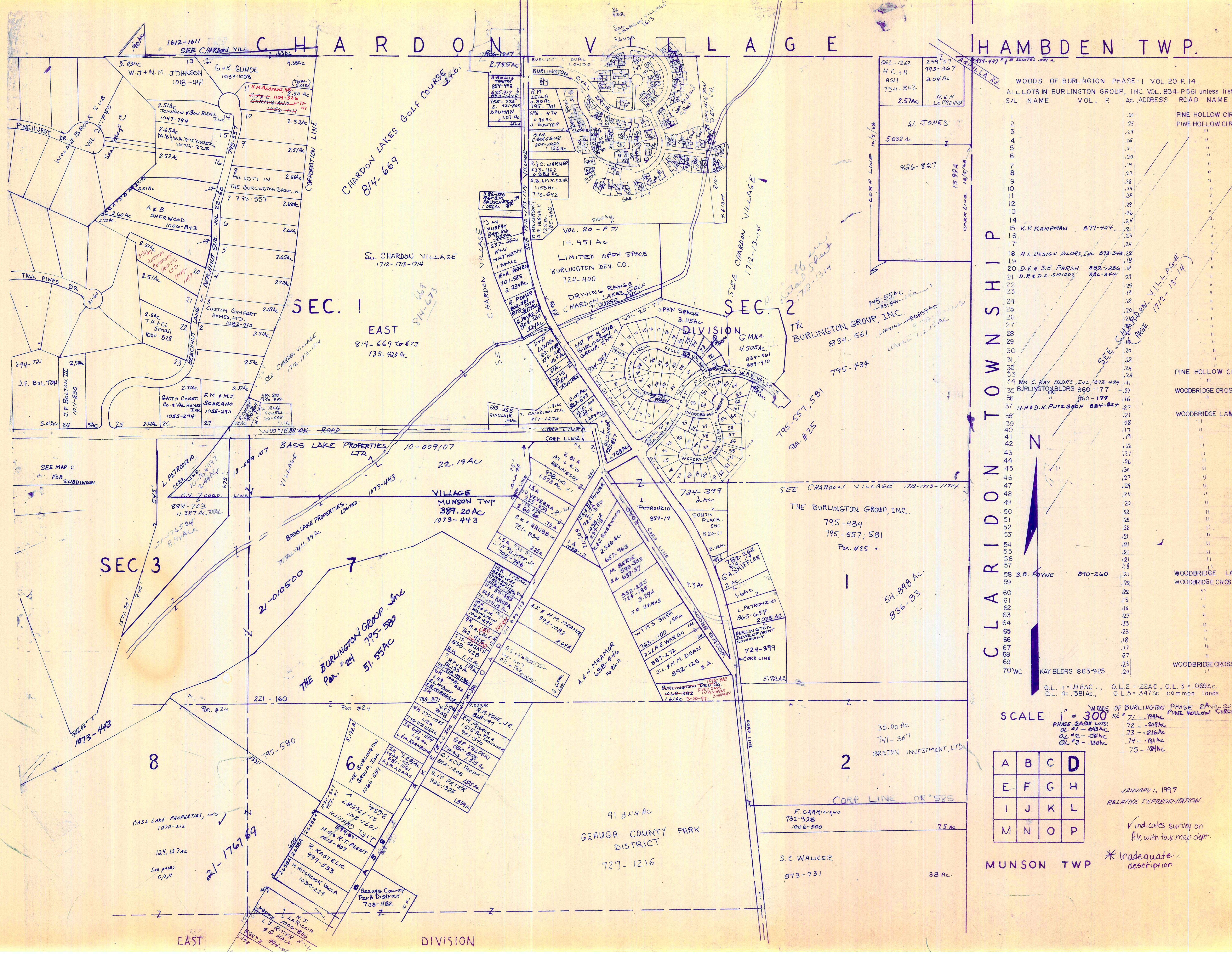
WELMAN GAYLORD
 734-809
 734-899

Par. #37
 THE BURLINGTON GROUP, INC.
 795-484
 795-557, 587

Par. #34
 THE BURLINGTON GROUP, INC.
 795-484
 795-557, 587

PARK RESERVE

MUNSON TWP



CHARDON VILLAGE
HAMLDEN TWP.

WOODS OF BURLINGTON PHASE-1 VOL. 20-P 14
ALL LOTS IN BURLINGTON GROUP, INC. VOL. 834-P561 unless listed

S/L	NAME	VOL.	P.	Ac.	ADDRESS	ROAD NAME
1				.30		PINE HOLLOW CIRCLE
2				.75		PINE HOLLOW CIRCLE
3				.29		"
4				.26		"
5				.21		"
6				.20		"
7				.19		"
8				.23		"
9				.28		"
10				.25		"
11				.28		"
12				.26		"
13				.28		"
14				.24		"
15	K.P. KAMPMAN	877-404		.21		"
16				.23		"
17				.24		"
18	R.L. DESIGN BLDGS, INC.	893-343		.22		"
19				.18		"
20	D.V. & S.E. PARSH	882-1286		.18		"
21	D.R.E.S. SMIDDY	886-344		.29		"
22				.25		"
23				.19		"
24				.22		"
25				.20		"
26				.20		"
27				.27		"
28				.28		"
29				.18		"
30				.20		"
31				.22		"
32				.24		"
33				.24		"
34	Wm. C. KAY BLDGS, INC.	1833-489		.41		PINE HOLLOW CIRCLE
35	BURLINGTON BLDRS	860-177		.27		WOODBRIDGE CROSSING
36		860-177		.16		"
37	H.H.D. K. PUTZBACH	884-824		.27		WOODBRIDGE LANE
38				.21		"
39				.28		"
40				.17		"
41				.19		"
42				.33		"
43				.27		"
44				.26		"
45				.30		"
46				.27		"
47				.24		"
48				.20		"
49				.22		"
50				.22		"
51				.26		"
52				.21		"
53				.21		"
54				.18		"
55				.21		"
56				.21		"
57				.18		"
58	S.B. FAYNE	890-260		.21		WOODBRIDGE LANE
59				.22		WOODBRIDGE CROSSING
60				.22		"
61				.15		"
62				.16		"
63				.27		"
64				.33		"
65				.23		"
66				.18		"
67				.17		"
68				.27		"
69				.23		WOODBRIDGE CROSSING
70	KAY BLDRS	863-925		.24		"

O.L. 1 = 1.178 AC, O.L. 2 = 2.22 AC, O.L. 3 = .069 AC,
O.L. 4 = .581 AC, O.L. 5 = .347 AC common lands

SCALE 1" = 300'
WOODS OF BURLINGTON PHASE 2 VOL. 20-P 71
PINE HOLLOW CIRCLE
PHASE 2 ACRES:
OL #1 - .048 AC
OL #2 - .081 AC
OL #3 - .130 AC
71 - .194 AC
72 - .208 AC
73 - .216 AC
74 - .181 AC
75 - .184 AC

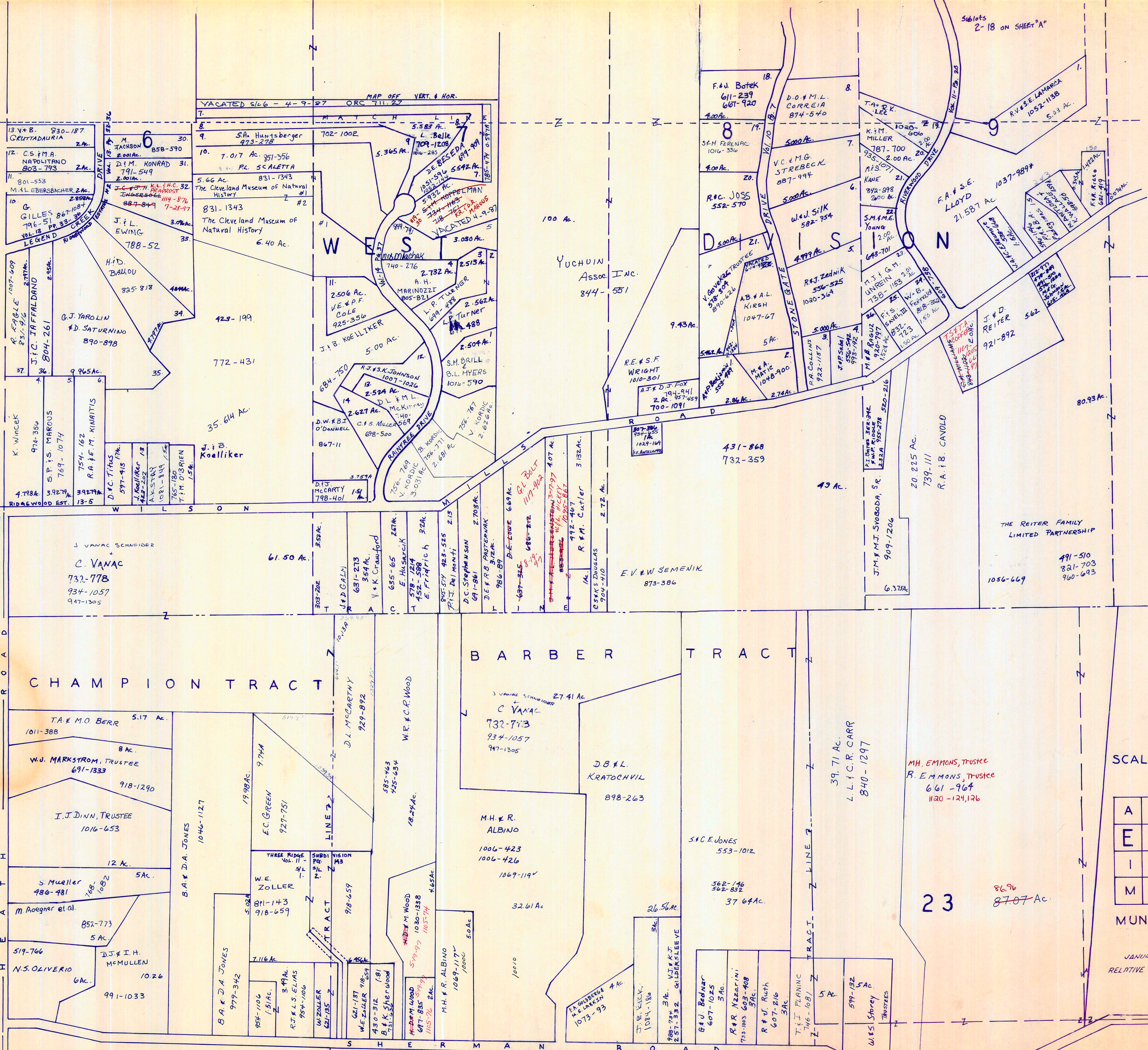
A	B	C	D
E	F	G	H
I	J	K	L
M	N	O	P

JANUARY 1, 1997
RELATIVE REPRESENTATION
✓ indicates survey on file with tax map dept.
* inadequate description

MUNSON TWP

T O W N S H I P

C H E S T E R



12

TRACT TWO

SCALE 1" = 300'

A	B	C	D
E	F	G	H
I	J	K	L
M	N	O	P

MUNSON TWP.

JANUARY 1, 1997
RELATIVE REPRESENTATION

* Inadequate description indicates survey on file with tax map dept



1038-499, cat A
1038-497
1038-495
1038-494
1038-493
1038-492
1038-491
1038-490
1038-489
1038-488
1038-487
1038-486
1038-485
1038-484
1038-483
1038-482
1038-481
1038-480
1038-479
1038-478
1038-477
1038-476
1038-475
1038-474
1038-473
1038-472
1038-471
1038-470
1038-469
1038-468
1038-467
1038-466
1038-465
1038-464
1038-463
1038-462
1038-461
1038-460
1038-459
1038-458
1038-457
1038-456
1038-455
1038-454
1038-453
1038-452
1038-451
1038-450
1038-449
1038-448
1038-447
1038-446
1038-445
1038-444
1038-443
1038-442
1038-441
1038-440
1038-439
1038-438
1038-437
1038-436
1038-435
1038-434
1038-433
1038-432
1038-431
1038-430
1038-429
1038-428
1038-427
1038-426
1038-425
1038-424
1038-423
1038-422
1038-421
1038-420
1038-419
1038-418
1038-417
1038-416
1038-415
1038-414
1038-413
1038-412
1038-411
1038-410
1038-409
1038-408
1038-407
1038-406
1038-405
1038-404
1038-403
1038-402
1038-401
1038-400
1038-399
1038-398
1038-397
1038-396
1038-395
1038-394
1038-393
1038-392
1038-391
1038-390
1038-389
1038-388
1038-387
1038-386
1038-385
1038-384
1038-383
1038-382
1038-381
1038-380
1038-379
1038-378
1038-377
1038-376
1038-375
1038-374
1038-373
1038-372
1038-371
1038-370
1038-369
1038-368
1038-367
1038-366
1038-365
1038-364
1038-363
1038-362
1038-361
1038-360
1038-359
1038-358
1038-357
1038-356
1038-355
1038-354
1038-353
1038-352
1038-351
1038-350
1038-349
1038-348
1038-347
1038-346
1038-345
1038-344
1038-343
1038-342
1038-341
1038-340
1038-339
1038-338
1038-337
1038-336
1038-335
1038-334
1038-333
1038-332
1038-331
1038-330
1038-329
1038-328
1038-327
1038-326
1038-325
1038-324
1038-323
1038-322
1038-321
1038-320
1038-319
1038-318
1038-317
1038-316
1038-315
1038-314
1038-313
1038-312
1038-311
1038-310
1038-309
1038-308
1038-307
1038-306
1038-305
1038-304
1038-303
1038-302
1038-301
1038-300
1038-299
1038-298
1038-297
1038-296
1038-295
1038-294
1038-293
1038-292
1038-291
1038-290
1038-289
1038-288
1038-287
1038-286
1038-285
1038-284
1038-283
1038-282
1038-281
1038-280
1038-279
1038-278
1038-277
1038-276
1038-275
1038-274
1038-273
1038-272
1038-271
1038-270
1038-269
1038-268
1038-267
1038-266
1038-265
1038-264
1038-263
1038-262
1038-261
1038-260
1038-259
1038-258
1038-257
1038-256
1038-255
1038-254
1038-253
1038-252
1038-251
1038-250
1038-249
1038-248
1038-247
1038-246
1038-245
1038-244
1038-243
1038-242
1038-241
1038-240
1038-239
1038-238
1038-237
1038-236
1038-235
1038-234
1038-233
1038-232
1038-231
1038-230
1038-229
1038-228
1038-227
1038-226
1038-225
1038-224
1038-223
1038-222
1038-221
1038-220
1038-219
1038-218
1038-217
1038-216
1038-215
1038-214
1038-213
1038-212
1038-211
1038-210
1038-209
1038-208
1038-207
1038-206
1038-205
1038-204
1038-203
1038-202
1038-201
1038-200
1038-199
1038-198
1038-197
1038-196
1038-195
1038-194
1038-193
1038-192
1038-191
1038-190
1038-189
1038-188
1038-187
1038-186
1038-185
1038-184
1038-183
1038-182
1038-181
1038-180
1038-179
1038-178
1038-177
1038-176
1038-175
1038-174
1038-173
1038-172
1038-171
1038-170
1038-169
1038-168
1038-167
1038-166
1038-165
1038-164
1038-163
1038-162
1038-161
1038-160
1038-159
1038-158
1038-157
1038-156
1038-155
1038-154
1038-153
1038-152
1038-151
1038-150
1038-149
1038-148
1038-147
1038-146
1038-145
1038-144
1038-143
1038-142
1038-141
1038-140
1038-139
1038-138
1038-137
1038-136
1038-135
1038-134
1038-133
1038-132
1038-131
1038-130
1038-129
1038-128
1038-127
1038-126
1038-125
1038-124
1038-123
1038-122
1038-121
1038-120
1038-119
1038-118
1038-117
1038-116
1038-115
1038-114
1038-113
1038-112
1038-111
1038-110
1038-109
1038-108
1038-107
1038-106
1038-105
1038-104
1038-103
1038-102
1038-101
1038-100
1038-99
1038-98
1038-97
1038-96
1038-95
1038-94
1038-93
1038-92
1038-91
1038-90
1038-89
1038-88
1038-87
1038-86
1038-85
1038-84
1038-83
1038-82
1038-81
1038-80
1038-79
1038-78
1038-77
1038-76
1038-75
1038-74
1038-73
1038-72
1038-71
1038-70
1038-69
1038-68
1038-67
1038-66
1038-65
1038-64
1038-63
1038-62
1038-61
1038-60
1038-59
1038-58
1038-57
1038-56
1038-55
1038-54
1038-53
1038-52
1038-51
1038-50
1038-49
1038-48
1038-47
1038-46
1038-45
1038-44
1038-43
1038-42
1038-41
1038-40
1038-39
1038-38
1038-37
1038-36
1038-35
1038-34
1038-33
1038-32
1038-31
1038-30
1038-29
1038-28
1038-27
1038-26
1038-25
1038-24
1038-23
1038-22
1038-21
1038-20
1038-19
1038-18
1038-17
1038-16
1038-15
1038-14
1038-13
1038-12
1038-11
1038-10
1038-9
1038-8
1038-7
1038-6
1038-5
1038-4
1038-3
1038-2
1038-1

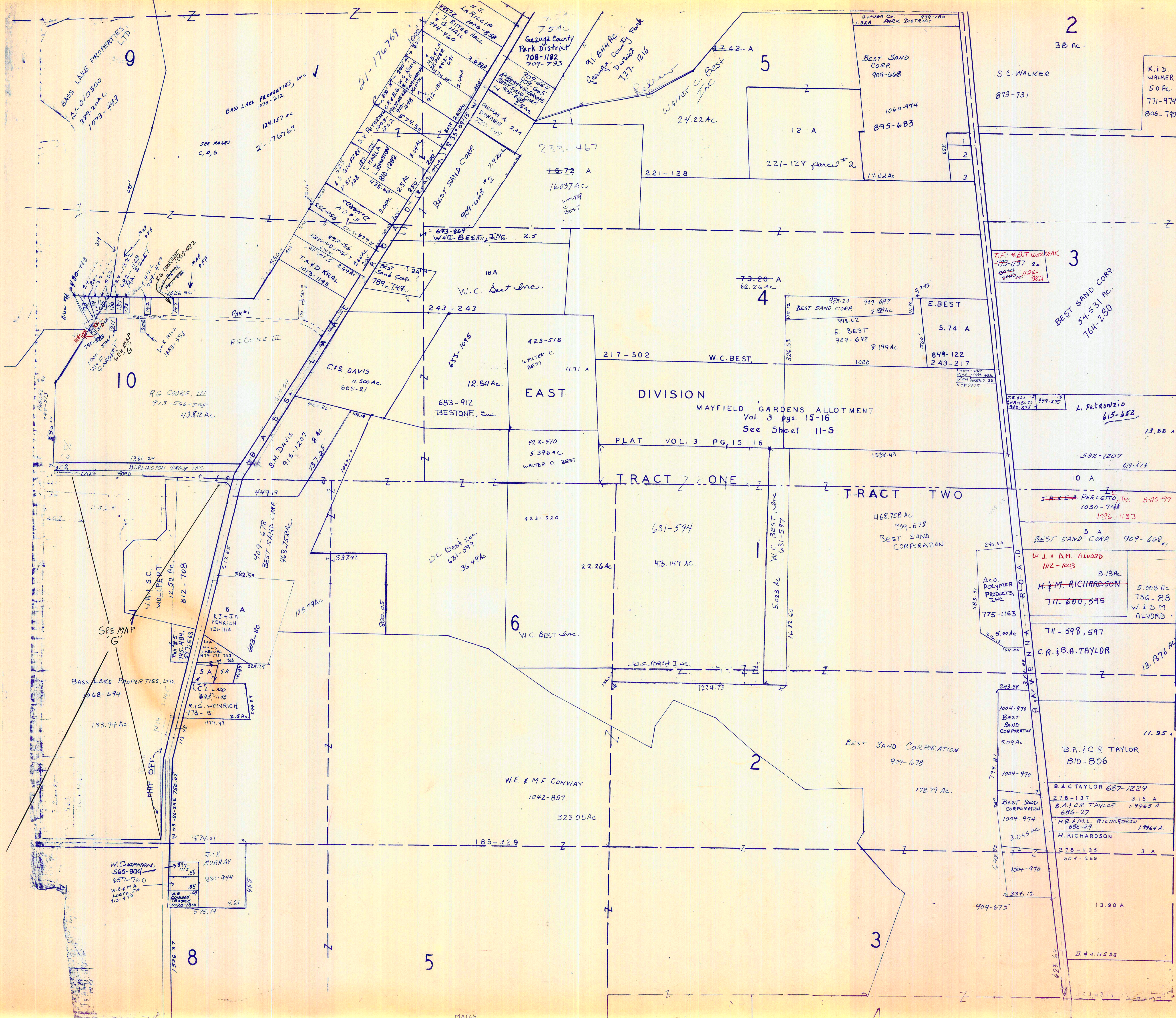
JANUARY 1, 1997
RELATIVE REPRESENTATION

A	B	C	D
E	F	G	H
I	J	K	L
M	N	O	P

MUNSON TWP.
SCALE 1"=300'

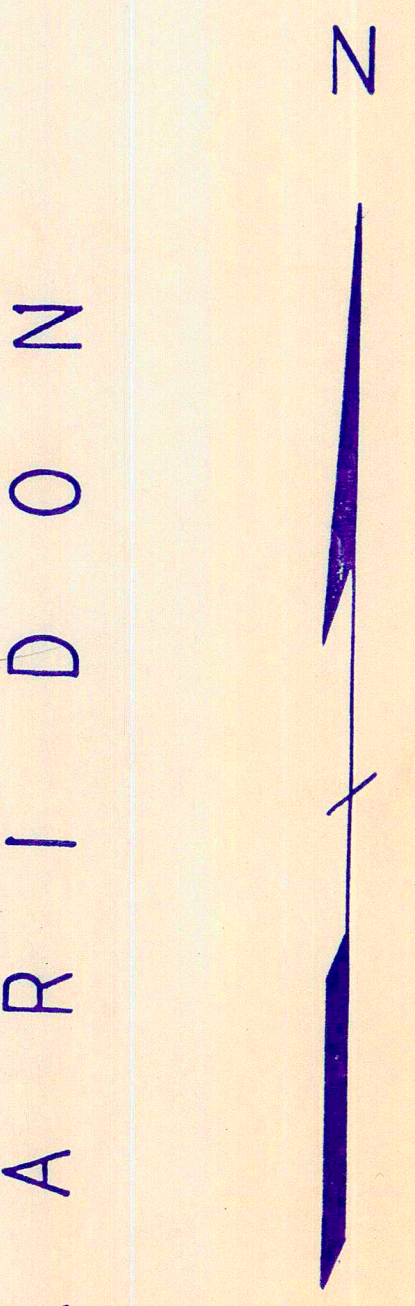
Indicates survey
on file with
reg. dept.

if inadequate
description



NEW ORIGINAL LOT LINE PER PLAT 1870
 OLD ORIGINAL LOT LINE PER PLATS 1830 & 1846

SEE MUNSON TWP. (PROBLEM AREA) FILE



SCALE 1"=300'

JANUARY 1, 1997
 RELATIVE REPRESENTATION

A	B	C	D
E	F	G	H
I	J	K	L
M	N	O	P

MUNSON TWP

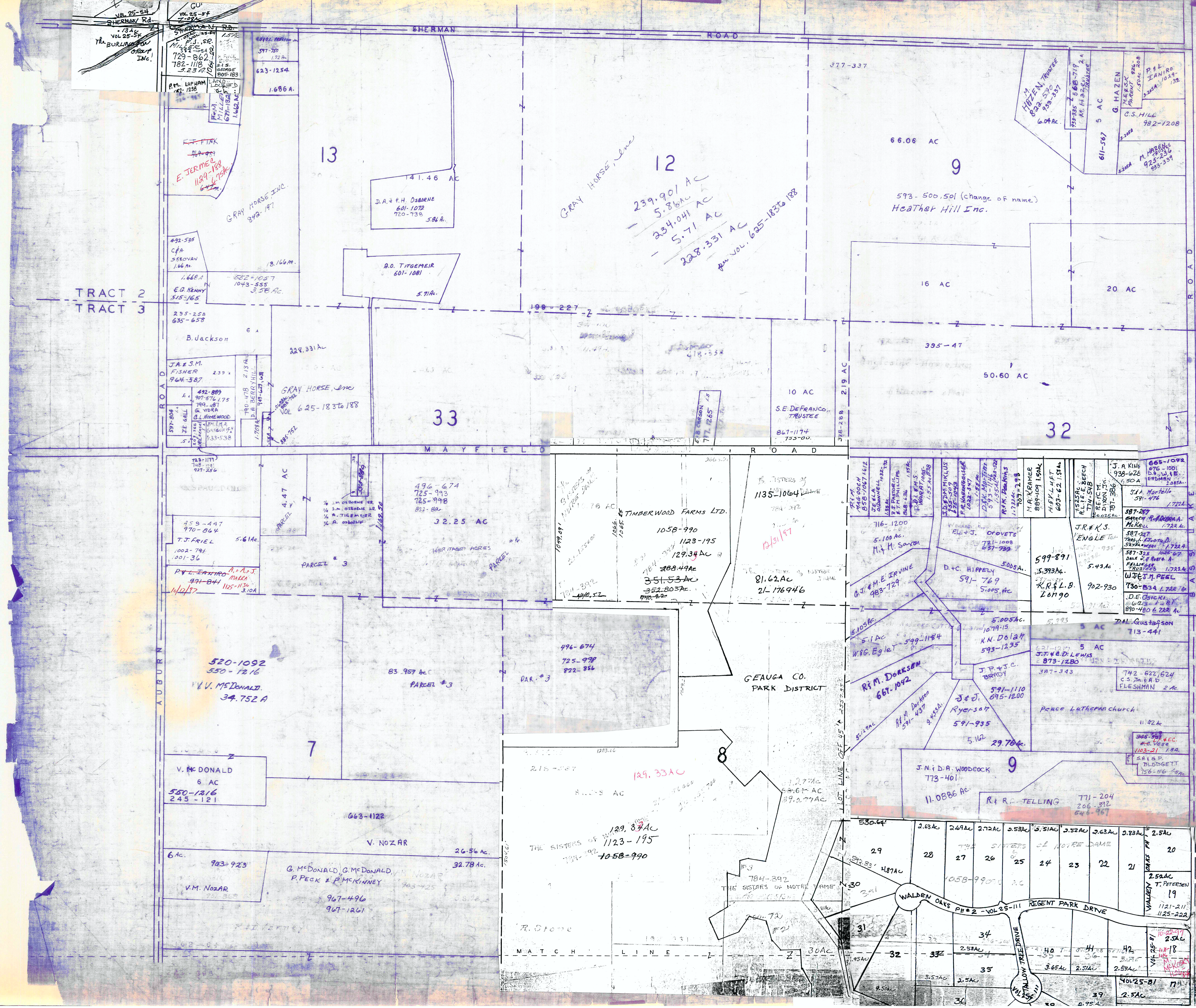
*Inadequate description

9
 10
 8
 5
 5
 3

2
 3
 4
 5
 6
 8
 9
 10

SEE MAP G
 SEE MAPS C, D, G
 MAP OFF.

1075-80
 736-261
 736-709
 1075-80
 736-261
 736-709



N

JANUARY 1, 1907
RELATIVE REPRESENTATION

A	B	C	D
E	F	G	H
I	J	K	L
M	N	O	P

SCALE = 300 FT.

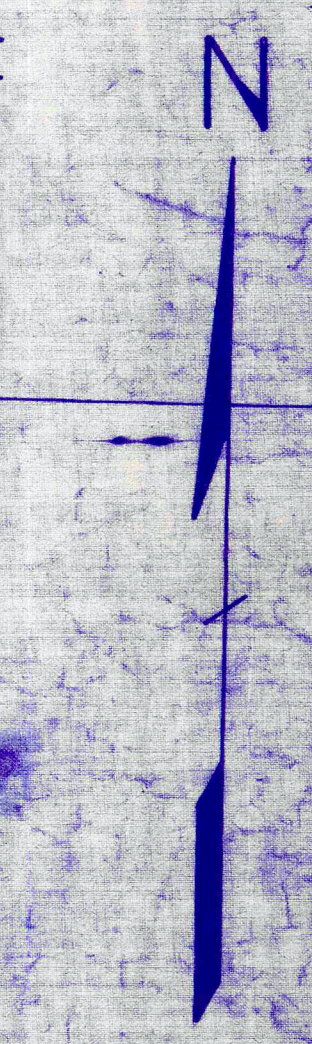
MUNSON TWP.

equates a
description

indicates survey
on file with
the map dept.



CLARIDON TOWNSHIP



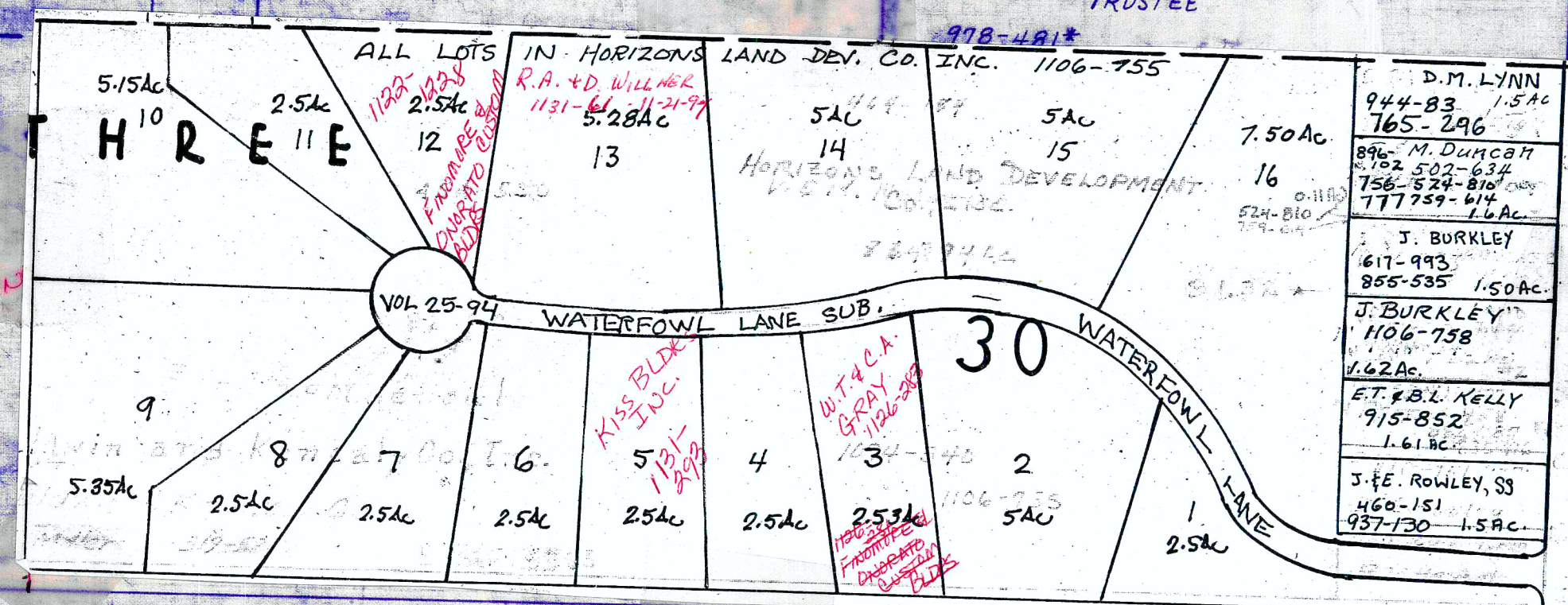
JANUARY 1, 1997
RELATIVE REPRESENTATION

A	B	C	D
E	F	G	H
I	J	K	L
M	N	O	P

SCALE 1" = 300 FT.

MUNSON TWP

* Inadequate description
 ✓ indicates survey on file with tax map dept.



TRACT FIVE

W.E. & M.F. CONWAY
1042-857
323.05 AC

WALTER C. BEST
1979-11

D. & P.J. PAULIN
733-1259

J.B. KAZUK
839-1044
841-376

J.W. AKE, TRUSTEE
705-772
1035-774

TRIAD VENTURES LTD
1095-606
3-14-97

Domenic Nero Const. Co.
509-207

BOARD OF TRUSTEES
OF MUNSON TOWNSHIP
1036-1107

285-370 MUNSON B. OF E.
J.C. Trzaska I
505-982
734-411

I. Zielinski
505-984
P. S. Ac. 893-105
535-507

5 AC
BERNARD & PATRICIA A. HARCHER
B.M. KAVINSKY
1058-590
M. FORT
678-1255
853-7008

7. B. J.A. & L.M. HALL
637-1059
3.55 AC

8. J.E. & M. SCHROETER
734-1173
3.45 AC

9. H.H. Gozdanovic
621-611
3.10 AC

10. G. ATTINA
621-20
836-216

11. J.E. GIBSON
R.L. PAOLINO
839-963
3.02 AC

12. J.E. GIBSON
R.L. PAOLINO
839-963
3.02 AC

13. J.E. GIBSON
R.L. PAOLINO
839-963
3.02 AC

GREENBRIER SUBDIV.

T.A. HALL EXCAVATING
& CONTRACTING CO. INC.
1097-561
1845 AC

D.M. LYNN
944-83
765-296

J. BURKLEY
617-993
985-535

J. BURKLEY
1104-758
1628

E.T. & B.L. KELLY
915-852
1.61 AC

J.F. ROWLEY, SR.
460-151
937-730

203-311
C.A. COLLIER
890-186

DE. J.K. CUNNINGHAM
734-59

Gannon
643-798

M. G. M. P. ROBERICK
627-670

R. R. & B. SHAEFER
1050-255

G.E. & A.A. ADAMS
1062-1146

603-311
3.52 AC

892-480

734-59

3.75 AC

643-798 2 AC

4.25 AC

892-480

2 AC

690-92

2 AC

60.02 A

509-834

524-993 2A
L.R. TROBICH

Domenic Nero Construction
Co. Inc.
915-509-504

D.M. McOSKEY
R.O. McOSKEY
3.044 AC
854-468
5.07 AC

P.F. & A.U. IAMIRO
968-1283

103-311
3.52 AC

892-480

734-59

3.75 AC

643-798 2 AC

4.25 AC

892-480

2 AC

690-92

2 AC

103-311
3.52 AC

892-480

734-59

3.75 AC

643-798 2 AC

4.25 AC

892-480

2 AC

690-92

2 AC

103-311
3.52 AC

892-480

734-59

3.75 AC

643-798 2 AC

4.25 AC

892-480

2 AC

690-92

2 AC

257-307 W. FOWLER

CHESTER TOWNSHIP
HEATH ROAD
VALLEY VIEW ACRES
VOL. 4 - PG. 33-34



TRACT 3 N

SCALE 1"=300'

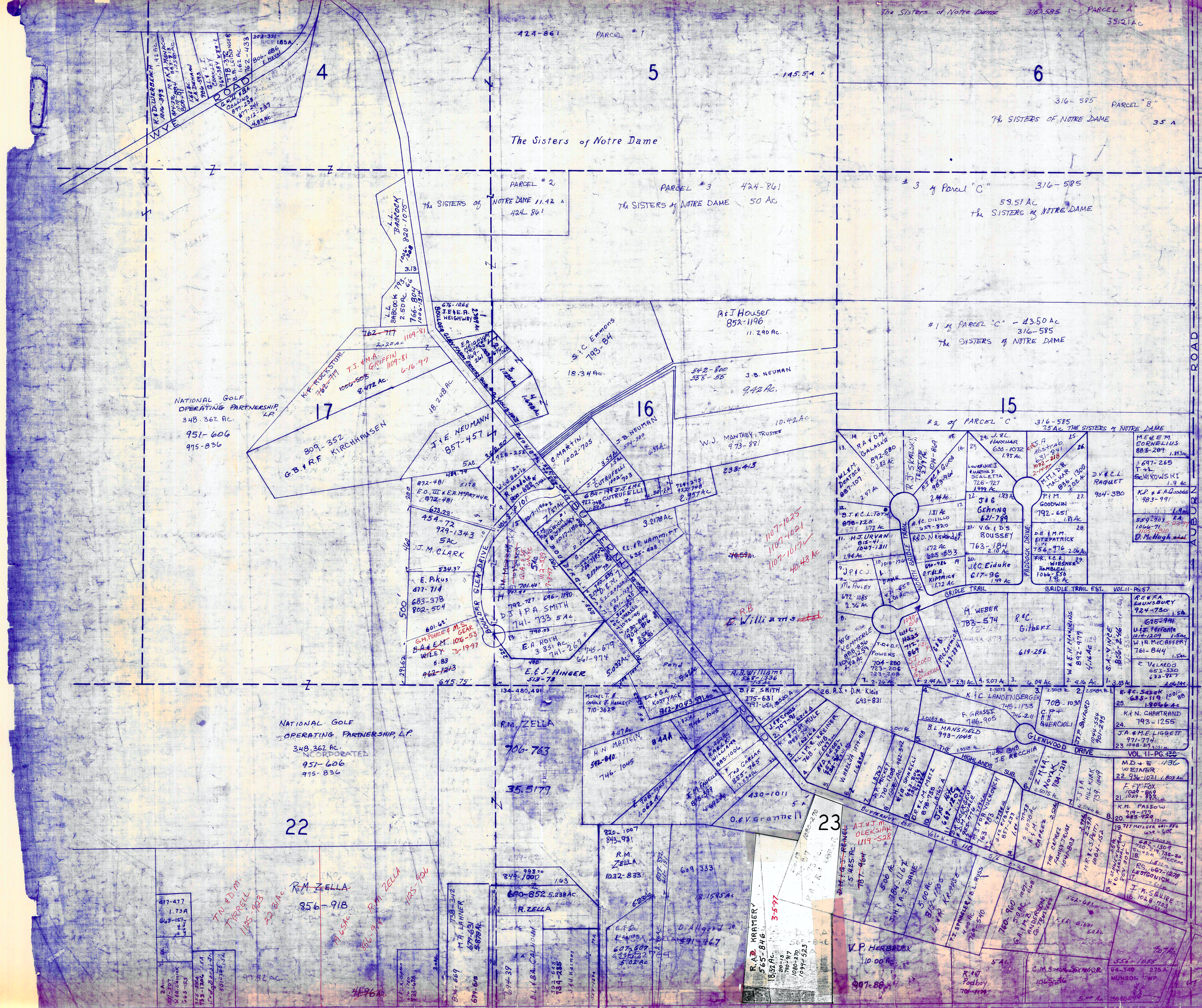
RELATIVE REPRESENTATION
JANUARY 1, 1997

✓ indicates survey on file with tax map dept.

A	B	C	D
E	F	G	H
I	J	K	L
M	N	O	P

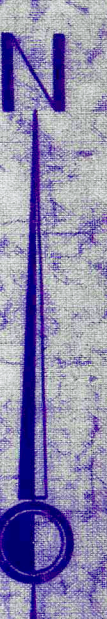
MUNSON TWP

* Inadequate description
THE BURNS REALTY CO'S ROCK HAVEN SPRING SUBDIVISION VOL. 1 PG. 102-103
1-11-12-13-14-15-16-17-18-19-20-21-22-23-24-25-26-27-28-29-30-31-32-33-34-35-36-37-38-39-40-41-42-43-44-45-46-47-48-49-50-51-52-53-54-55-56-57-58-59-60-61-62-63-64-65-66-67-68-69-70-71-72-73-74-75-76-77-78-79-80-81-82-83-84-85-86-87-88-89-90-91-92-93-94-95-96-97-98-99-100-101-102-103-104-105-106-107-108-109-110-111-112-113-114-115-116-117-118-119-120-121-122-123-124-125-126-127-128-129-130-131-132-133-134-135-136-137-138-139-140-141-142-143-144-145-146-147-148-149-150-151-152-153-154-155-156-157-158-159-160-161-162-163-164-165-166-167-168-169-170-171-172-173-174-175-176-177-178-179-180-181-182-183-184-185-186-187-188-189-190-191-192-193-194-195-196-197-198-199-200-201-202-203-204-205-206-207-208-209-210-211-212-213-214-215-216-217-218-219-220-221-222-223-224-225-226-227-228-229-230-231-232-233-234-235-236-237-238-239-240-241-242-243-244-245-246-247-248-249-250-251-252-253-254-255-256-257-258-259-260-261-262-263-264-265-266-267-268-269-270-271-272-273-274-275-276-277-278-279-280-281-282-283-284-285-286-287-288-289-290-291-292-293-294-295-296-297-298-299-300-301-302-303-304-305-306-307-308-309-310-311-312-313-314-315-316-317-318-319-320-321-322-323-324-325-326-327-328-329-330-331-332-333-334-335-336-337-338-339-340-341-342-343-344-345-346-347-348-349-350-351-352-353-354-355-356-357-358-359-360-361-362-363-364-365-366-367-368-369-370-371-372-373-374-375-376-377-378-379-380-381-382-383-384-385-386-387-388-389-390-391-392-393-394-395-396-397-398-399-400-401-402-403-404-405-406-407-408-409-410-411-412-413-414-415-416-417-418-419-420-421-422-423-424-425-426-427-428-429-430-431-432-433-434-435-436-437-438-439-440-441-442-443-444-445-446-447-448-449-450-451-452-453-454-455-456-457-458-459-460-461-462-463-464-465-466-467-468-469-470-471-472-473-474-475-476-477-478-479-480-481-482-483-484-485-486-487-488-489-490-491-492-493-494-495-496-497-498-499-500-501-502-503-504-505-506-507-508-509-510-511-512-513-514-515-516-517-518-519-520-521-522-523-524-525-526-527-528-529-530-531-532-533-534-535-536-537-538-539-540-541-542-543-544-545-546-547-548-549-550-551-552-553-554-555-556-557-558-559-560-561-562-563-564-565-566-567-568-569-570-571-572-573-574-575-576-577-578-579-580-581-582-583-584-585-586-587-588-589-590-591-592-593-594-595-596-597-598-599-600-601-602-603-604-605-606-607-608-609-610-611-612-613-614-615-616-617-618-619-620-621-622-623-624-625-626-627-628-629-630-631-632-633-634-635-636-637-638-639-640-641-642-643-644-645-646-647-648-649-650-651-652-653-654-655-656-657-658-659-660-661-662-663-664-665-666-667-668-669-670-671-672-673-674-675-676-677-678-679-680-681-682-683-684-685-686-687-688-689-690-691-692-693-694-695-696-697-698-699-700-701-702-703-704-705-706-707-708-709-710-711-712-713-714-715-716-717-718-719-720-721-722-723-724-725-726-727-728-729-730-731-732-733-734-735-736-737-738-739-740-741-742-743-744-745-746-747-748-749-750-751-752-753-754-755-756-757-758-759-760-761-762-763-764-765-766-767-768-769-770-771-772-773-774-775-776-777-778-779-780-781-782-783-784-785-786-787-788-789-790-791-792-793-794-795-796-797-798-799-800-801-802-803-804-805-806-807-808-809-810-811-812-813-814-815-816-817-818-819-820-821-822-823-824-825-826-827-828-829-830-831-832-833-834-835-836-837-838-839-840-841-842-843-844-845-846-847-848-849-850-851-852-853-854-855-856-857-858-859-860-861-862-863-864-865-866-867-868-869-870-871-872-873-874-875-876-877-878-879-880-881-882-883-884-885-886-887-888-889-890-891-892-893-894-895-896-897-898-899-900-901-902-903-904-905-906-907-908-909-910-911-912-913-914-915-916-917-918-919-920-921-922-923-924-925-926-927-928-929-930-931-932-933-934-935-936-937-938-939-940-941-942-943-944-945-946-947-948-949-950-951-952-953-954-955-956-957-958-959-960-961-962-963-964-965-966-967-968-969-970-971-972-973-974-975-976-977-978-979-980-981-982-983-984-985-986-987-988-989-990-991-992-993-994-995-996-997-998-999-1000-1001-1002-1003-1004-1005-1006-1007-1008-1009-1010-1011-1012-1013-1014-1015-1016-1017-1018-1019-1020-1021-1022-1023-1024-1025-1026-1027-1028-1029-1030-1031-1032-1033-1034-1035-1036-1037-1038-1039-1040-1041-1042-1043-1044-1045-1046-1047-1048-1049-1050-1051-1052-1053-1054-1055-1056-1057-1058-1059-1060-1061-1062-1063-1064-1065-1066-1067-1068-1069-1070-1071-1072-1073-1074-1075-1076-1077-1078-1079-1080-1081-1082-1083-1084-1085-1086-1087-1088-1089-1090-1091-1092-1093-1094-1095-1096-1097-1098-1099-1100-1101-1102-1103-1104-1105-1106-1107-1108-1109-1110-1111-1112-1113-1114-1115-1116-1117-1118-1119-1120-1121-1122-1123-1124-1125-1126-1127-1128-1129-1130-1131-1132-1133-1134-1135-1136-1137-1138-1139-1140-1141-1142-1143-1144-1145-1146-1147-1148-1149-1150-1151-1152-1153-1154-1155-1156-1157-1158-1159-1160-1161-1162-1163-1164-1165-1166-1167-1168-1169-1170-1171-1172-1173-1174-1175-1176-1177-1178-1179-1180-1181-1182-1183-1184-1185-1186-1187-1188-1189-1190-1191-1192-1193-1194-1195-1196-1197-1198-1199-1200-1201-1202-1203-1204-1205-1206-1207-1208-1209-1210-1211-1212-1213-1214-1215-1216-1217-1218-1219-1220-1221-1222-1223-1224-1225-1226-1227-1228-1229-1230-1231-1232-1233-1234-1235-1236-1237-1238-1239-1240-1241-1242-1243-1244-1245-1246-1247-1248-1249-1250-1251-1252-1253-1254-1255-1256-1257-1258-1259-1260-1261-1262-1263-1264-1265-1266-1267-1268-1269-1270-1271-1272-1273-1274-1275-1276-1277-1278-1279-1280-1281-1282-1283-1284-1285-1286-1287-1288-1289-1290-1291-1292-1293-1294-1295-1296-1297-1298-1299-1300-1301-1302-1303-1304-1305-1306-1307-1308-1309-1310-1311-1312-1313-1314-1315-1316-1317-1318-1319-1320-1321-1322-1323-1324-1325-1326-1327-1328-1329-1330-1331-1332-1333-1334-1335-1336-1337-1338-1339-1340-1341-1342-1343-1344-1345-1346-1347-1348-1349-1350-1351-1352-1353-1354-1355-1356-1357-1358-1359-1360-1361-1362-1363-1364-1365-1366-1367-1368-1369-1370-1371-1372-1373-1374-1375-1376-1377-1378-1379-1380-1381-1382-1383-1384-1385-1386-1387-1388-1389-1390-1391-1392-1393-1394-1395-1396-1397-1398-1399-1400-1401-1402-1403-1404-1405-1406-1407-1408-1409-1410-1411-1412-1413-1414-1415-1416-1417-1418-1419-1420-1421-1422-1423-1424-1425-1426-1427-1428-1429-1430-1431-1432-1433-1434-1435-1436-1437-1438-1439-1440-1441-1442-1443-1444-1445-1446-1447-1448-1449-1450-1451-1452-1453-1454-1455-1456-1457-1458-1459-1460-1461-1462-1463-1464-1465-1466-1467-1468-1469-1470-1471-1472-1473-1474-1475-1476-1477-1478-1479-1480-1481-1482-1483-1484-1485-1486-1487-1488-1489-1490-1491-1492-1493-1494-1495-1496-1497-1498-1499-1500-1501-1502-1503-1504-1505-1506-1507-1508-1509-1510-1511-1512-1513-1514-1515-1516-1517-1518-1519-1520-1521-1522-1523-1524-1525-1526-1527-1528-1529-1530-1531-1532-1533-1534-1535-1536-1537-1538-1539-1540-1541-1542-1543-1544-1545-1546-1547-1548-1549-1550-1551-1552-1553-1554-1555-1556-1557-1558-1559-1560-1561-1562-1563-1564-1565-1566-1567-1568-1569-1570-1571-1572-1573-1574-1575-1576-1577-1578-1579-1580-1581-1582-1583-1584-1585-1586-1587-1588-1589-1590-1591-1592-1593-1594-1595-1596-1597-1598-1599-1600-1601-1602-1603-1604-1605-1606-1607-1608-1609-1610-1611-1612-1613-1614-1615-1616-1617-1618-1619-1620-1621-1622-1623-1624-1625-1626-1627-1628-1629-1630-1631-1632-1633-1634-1635-1636-1637-1638-1639-1640-1641-1642-1643-1644-1645-1646-1647-1648-1649-1650-1651-1652-1653-1654-1655-1656-1657-1658-1659-1660-1661-1662-1663-1664-1665-1666-1667-1668-1669-1670-1671-1672-1673-1674-1675-1676-1677-1678-1679-1680-1681-1682-1683-1684-1685-1686-1687-1688-1689-1690-1691-1692-1693-1694-1695-1696-1697-1698-1699-1700-1701-1702-1703-1704-1705-1706-1707-1708-1709-1710-1711-1712-1713-1714-1715-1716-1717-1718-1719-1720-1721-1722-1723-1724-1725-1726-1727-1728-1729-1730-1731-1732-1733-1734-1735-1736-1737-1738-1739-1740-1741-1742-1743-1744-1745-1746-1747-1748-1749-1750-1751-1752-1753-1754-1755-1756-1757-1758-1759-1760-1761-1762-1763-1764-1765-1766-1767-1768-1769-1770-1771-1772-1773-1774-1775-1776-1777-1778-1779-1780-1781-1782-1783-1784-1785-1786-1787-1788-1789-1790-1791-1792-1793-1794-1795-1796-1797-1798-1799-1800-1801-1802-1803-1804-1805-1806-1807-1808-1809-1810-1811-1812-1813-1814-1815-1816-1817-1818-1819-1820-1821-1822-1823-1824-1825-1826-1827-1828-1829-1830-1831-1832-1833-1834-1835-1836-1837-1838-1839-1840-1841-1842-1843-1844-1845-1846-1847-1848-1849-1850-1851-1852-1853-1854-1855-1856-1857-1858-1859-1860-1861-1862-1863-1864-1865-1866-1867-1868-1869-1870-1871-1872-1873-1874-1875-1876-1877-1878-1879-1880-1881-1882-1883-1884-1885-1886-1887-1888-1889-1890-1891-1892-1893-1894-1895-1896-1897-1898-1899-1900-1901-1902-1903-1904-1905-1906-1907-1908-1909-1910-1911-1912-1913-1914-1915-1916-1917-1918-1919-1920-1921-1922-1923-1924-1925-1926-1927-1928-1929-1930-1931-1932-1933-1934-1935-1936-1937-1938-1939-1940-1941-1942-1943-1944-1945-1946-1947-1948-1949-1950-1951-1952-1953-1954-1955-1956-1957-1958-1959-1960-1961-1962-1963-1964-1965-1966-1967-1968-1969-1970-1971-1972-1973-1974-1975-1976-1977-1978-1979-1980-1981-1982-1983-1984-1985-1986-1987-1988-1989-1990-1991-1992-1993-1994-1995-1996-1997-1998-1999-2000-2001-2002-2003-2004-2005-2006-2007-2008-2009-2010-2011-2012-2013-2014-2015-2016-2017-2018-2019-2020-2021-2022-2023-2024-2025-2026-2027-2028-2029-2030-2031-2032-2033-2034-2035-2036-2037-2038-2039-2040-2041-2042-2043-2044-2045-2046-2047-2048-2049-2050-2051-2052-2053-2054-2055-2056-2057-2058-2059-2060-2061-2062-2063-2064-2065-2066-2067-2068-2069-2070-2071-2072-2073-2074-2075-2076-2077-2078-2079-2080-2081-2082-2083-2084-2085-2086-2087-2088-2089-2090-2091-2092-2093-2094-2095-2096-2097-2098-2099-2100-2101-2102-2103-2104-2105-2106-2107-2108-2109-2110-2111-2112-2113-2114-2115-2116-2117-2118-2119-2120-2121-2122-2123-2124-2125-2126-2127-2128-2129-2130-2131-2132-2133-2134-2135-2136-2137-2138-2139-2140-2141-2142-2143-2144-2145-2146-2147-2148-2149-2150-2151-2152-2153-2154-2155-2156-2157-2158-2159-2160-2161-2162-2163-2164-2165-2166-2167-2168-2169-2170-2171-2172-2173-2174-2175-2176-2177-2178-2179-2180-2181-2182-2183-2184-2185-2186-2187-2188-2189-2190-2191-2192-2193-2194-2195-2196-2197-2198-2199-2200-2201-2202-2203-2204-2205-2206-2207-2208-2209-2210-2211-2212-2213-2214-2215-2216-2217-2218-2219-2220-2221-2222-2223-2224-2225-2226-2227-2228-2229-2230-2231-2232-2233-2234-2235-2236-2237-2238-2239-2240-2241-2242-2243-2244-2245-2246-2247-2248-2249-2250-2251-2252-2253-2254-2255-2256-2257-2258-2259-2260-2261-2262-2263-2264-2265-2266-2267-2268-2269-2270-2271-2272-2273-2274-2275-2276-2277-2278-2279-2280-2281-2282-2283-2284-2285-2286-2287-2288-2289-2290-2291-2292-2293-2294-2295-2296-2297-2298-2299-2300-2301-2302-2303-2304-2305-2306-2307-2308-2309-2310-2311-2312-2313-2314-2315-2316-2317-2318-2319-2320-2321-2322-2323-2324-2325-2326-2327-2328-2329-2330-2331-2332-2333-2334-2335-2336-2337-2338-2339-2340-2341-2342-2343-2344-2345-2346-2347-2348-2349-2350-2351-2352-2353-2354-2355-2356-2357-2358-2359-2360-2361-2362-2363-2364-2365-2366-2367-2368-2369-2370-2371-2372-2373-2374-2375-2376-2377-2378-2379-2380-2381-2382-2383-2384-2385-2386-2387-2388-2389-2390-2391-2392-2393-2394-2395-2396-2397-2398-2399-2400-2401-2402-2403-2404-2405-2406-2407-2408-2409-2410-2411-2412-2413-2414-2415-2416-2417-2418-2419-2420-2421-2422-2423-2424-2425-2426-2427-2428-2429-2430-2431-2432-2433-2434-2435-2436-2437-2438-2439-2440-2441-2442-2443-2444-2445-2446-2447-2448-2449-2450-2451-2452-2453-2454-2455-2456-2457-2458-2459-2460-2461-2462-2463-2464-2465-2466-2467-2468-2469-2470-2471-2472-2473-2474-2475-2476-2477-2478-2479-2480-2481-2482-2483-2484-2485-2486-2487-2488-2489-2490-2491-2492-2493-2494-2495-2496-2497-2498-2499-2500-2501-2502-2503-2504-2505-2506-2507-2508-2509-2510-2511-2512-2513-2514-2515-2516-2517-2518-2519-2520-2521-2522-2523-2524-2525-2526-2527-2528-2529-2530-2531-2532-2533-2534-2535-2536-2537-2538-2539-2540-2541-2542-2543-2544-2545-2546-2547-2548-2549-2550-2551-2552-2553-2554-2555-2556-2557-2558-2559-2560-2561-2562-2563-2564-2565-2566-2567-2568-2569-2570-2571-2572-2573-2574-2575-2576-2577-2578



BEAN ROAD

TRACT 3



SCALE 1"=300 FT.

JAN. 1, 1997
RELATIVE REPRESENTATION

* inadequate description
✓ INDICATES SURVEY ON FILE WITH TAX MAP DEPT.

A	B	C	D
E	F	G	H
I	J	K	L
M	N	O	P

MUNSON TWP.

NATIONAL GOLF OPERATING PARTNERSHIP LP
348.362 AC.
951-606
915-836

NATIONAL GOLF OPERATING PARTNERSHIP, L.P.
348.362 AC.
INCORPORATED
951-606
915-836

R.M. ZELLA
856-918
R.M. ZELLA
856-918
R.M. ZELLA
856-918

R.A.B. KRAMER
565-846
1802 AC.
710-517
1080-270
1094-523

V.P. HERBERICH
10.00 AC.
907-864

MUNSON TWP.



* Inadequate description
 ✓ Indicates survey on file with tax map dept

SCALE IN FEET
 0 100 200

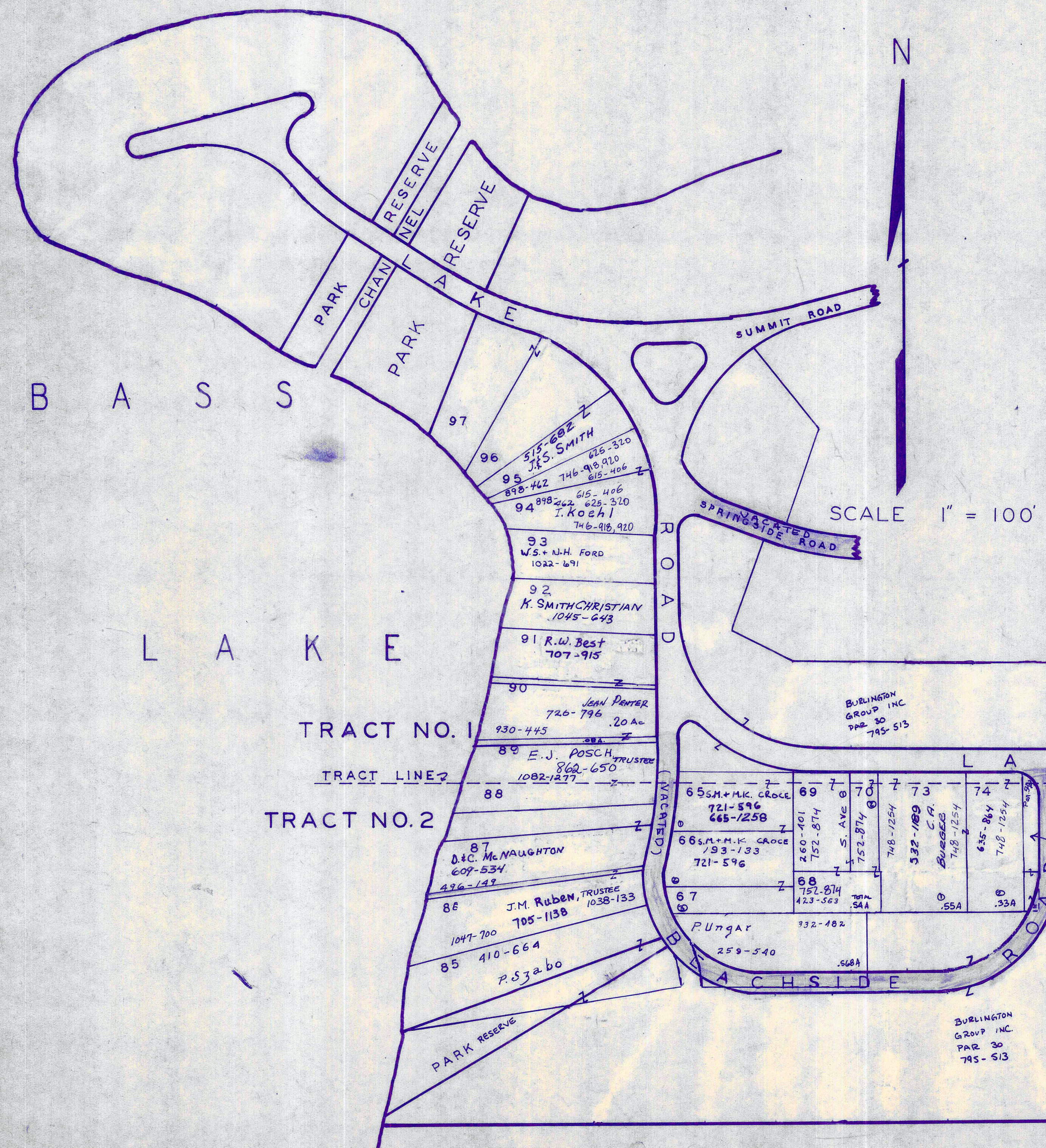
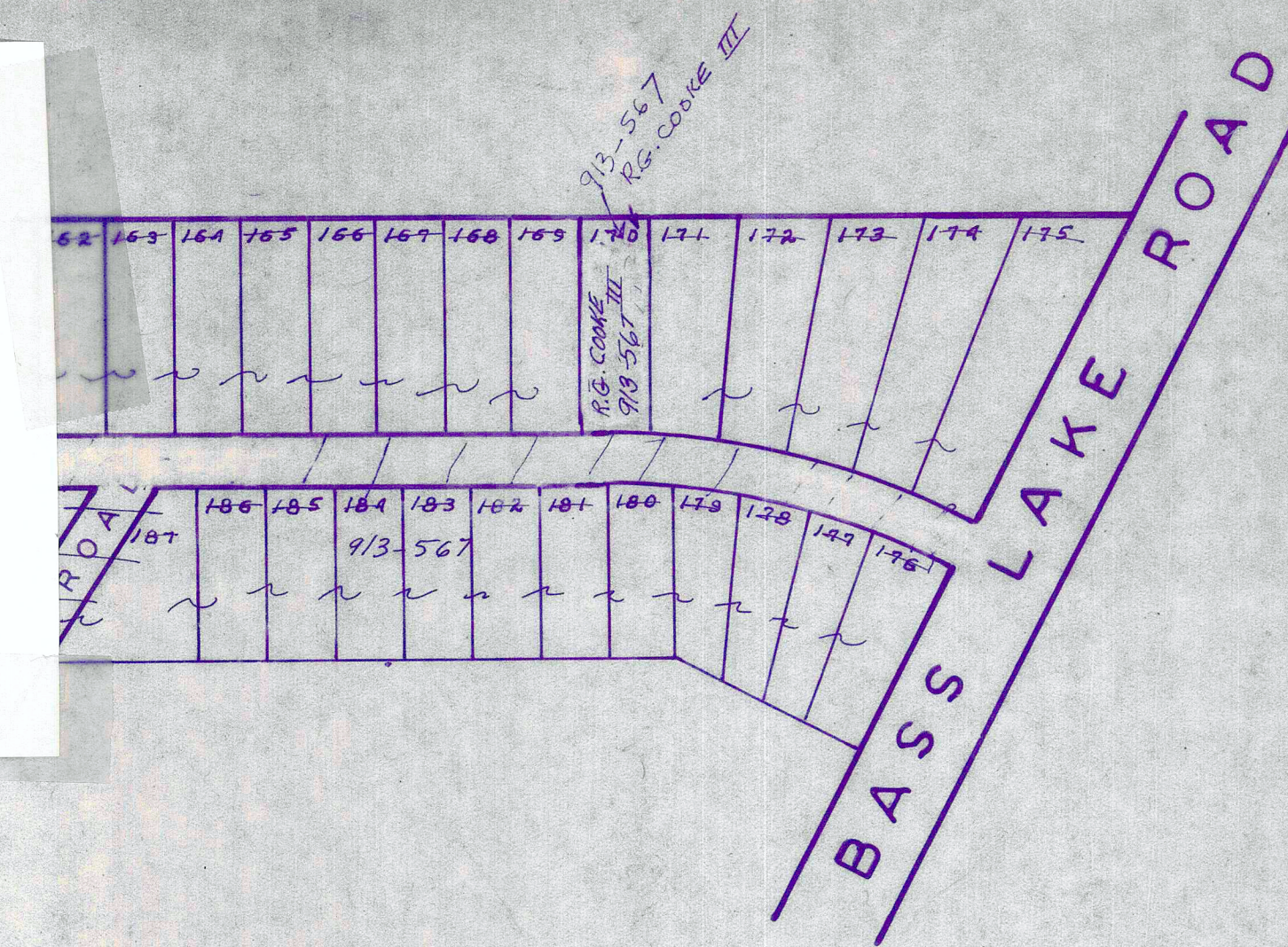
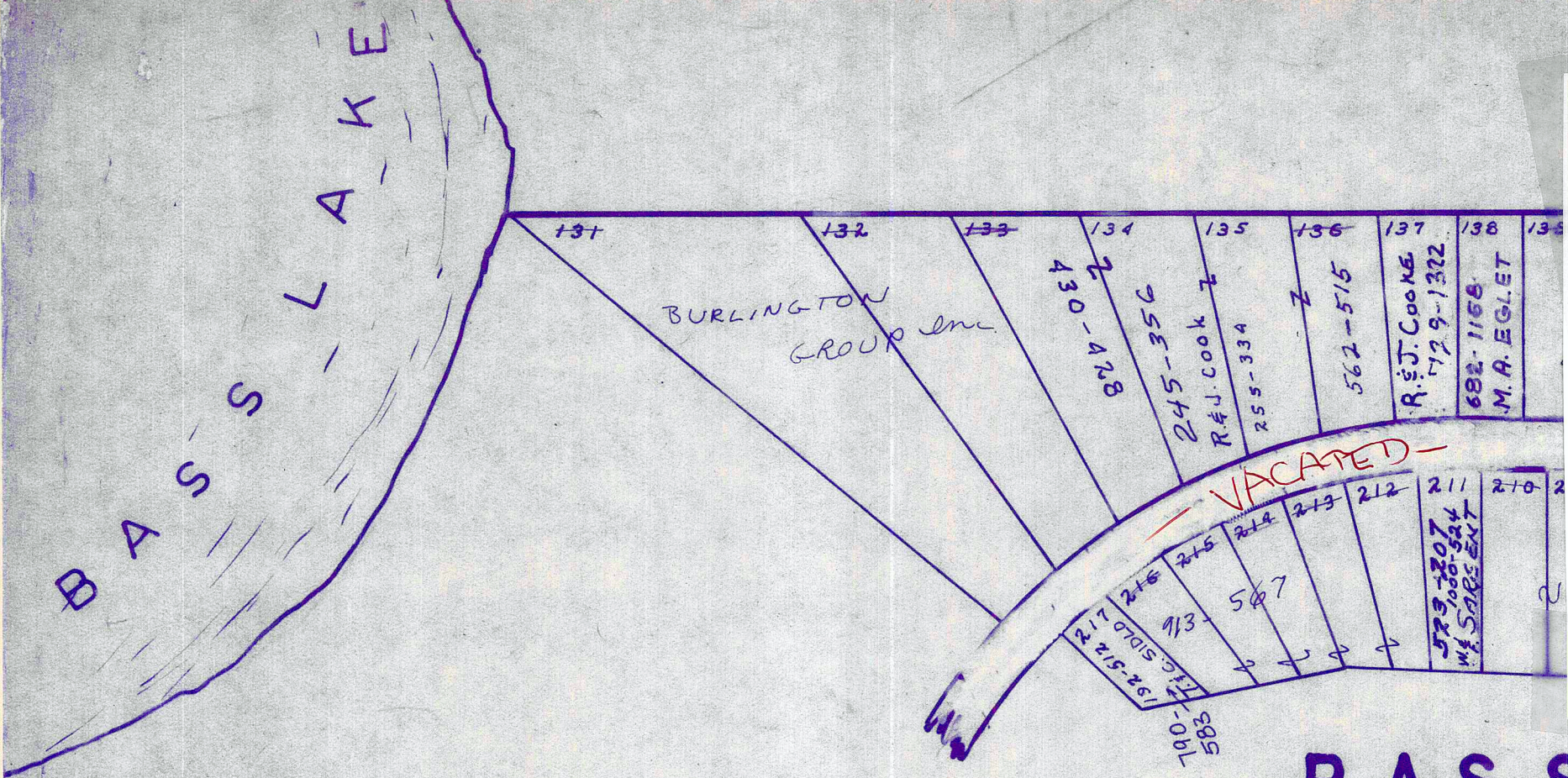
MUNSON
 BASS LAKE INVEST
 SUBDIVISIONS
 SUBLOTS 1-253 VOL 1-2
 SUBLOTS 256-284 VOL 1-2

JAN 1, 1997
 RELATIVE REPRESENTATION

11-R-1

SUBDIVISION HAS BEEN VACATED

* SEE MAP "G" & "H" FOR OWNERS



Pen. #30
THE BURLINGTON GROUP, INC.
795-513; 547
(inadequate description)

SCALE 1" = 100'

* Inadequate description
✓ INDICATES SURVEY ON FILE WITH TAX MAP DEPT.

THE BASS LAKE RESERVE CO'S SUBDIVISION NO. 2 AND RESUBDIVISION OF SUBDIVISION NO. 1 VOL. 1 - PG. 64-5-6-7

JANUARY 1, 1997
RELATIVE REPRESENTATION

WORMWOOD